

Restrictors and restrictor check valve type EB, BE, BC

Restrictors are a type of flow valve. They are used as a local flow resistance that suddenly reduces the line cross-section. The reduction in the cross-section is very short. As a result the volumetric flow is only dependent on the pressure difference and not on the viscosity. The restrictor check valve type BE and BC combines the function of a metering valve with a check valve. The valve is available as a perforated restrictor or as a slotted restrictor. It limits the volumetric flow during the switching of directional valves. E.g. it limits the flow or prevents excessively quick accumulator emptying.

The orifice insert type EB is primarily used in manifold mounting. As such an additional intermediate plate is not necessary.

Features and benefits:

- Max. 700 bar
- Simple design and installation

Intended applications:

- General hydraulics
- Winch controls
- Hydraulic pilot systems



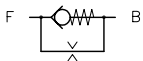
Nomenclature:	Orifice Restrictor check valve
Design:	Orifice insert Screw-in valve Version with housing for in-line installation
p_{max}:	700 bar
Q_{max}:	120 l/min

Design and order coding example

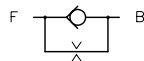
BC1	- 0,8	G
Basic type, size	Orifice	Design with housing
Type BC, size 1 to 3	Hole or slot type orifice, diameter in mm	For pipe connection, type BC, BE (E; F, G)
Additional versions		
▪ Type BC and BE with metric thread		

Function

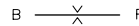
BC
Screw-in valve



BE

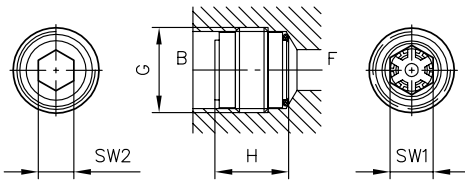


EB
Orifice insert

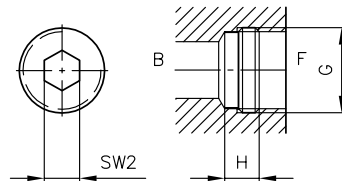


General parameters and dimensions

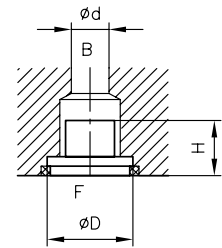
BC..
Screw-in valve



BE ..



EB..
Orifice insert



	Q_{\max} [l/min]	p_{\max} [bar]	Thread	Dimensions				m [g]
				H [mm]	G / D	SW = a/f 1/Æd	SW = a/f 2	
BC 1	20	700	G 1/4 A	13	G 1/4 A	SW 8	SW 4	6
BC 2	35	700	G 3/8 A	15	G 3/8 A	SW 9	SW 5	10
BC 3	60	500	G 1/2 A	18	G 1/2 A	SW 12	SW 8	24
BE 0	12	500	G 1/8 A	5	G 1/8 A	SW 4	-	2
BE 1	25	500	G 1/4 A	6	G 1/4 A	SW 5	-	4
BE 2	40	500	G 3/8 A	7	G 3/8 A	SW 8	-	6
BE 3	70	450	G 1/2 A	7.5	G 1/2 A	SW 10	-	10
BE 4	120	400	G 3/4 A	9	G 3/4 A	SW 12	-	18
EB 0	6	500	-	1.8	9	5.6	-	2
EB 1	10	700	-	1.8	11	7.5	-	4
EB 2	40	700	-	9	18	12.8	-	6
EB 3	100	500	-	11.5	22	16	-	10
EB 4	120	500	-	10	28	25	-	18

Associated technical data sheets:

- [Restrictor check valve type BC: D 6969 B](#)
- [Restrictor check valve type BE: D 7555 B](#)
- [Orifice type EB: D 6465](#)

- Restrictor check valves type RD, ED, RDF: [D 7540](#), [D 2570](#)

Similar products:

- Insert check valves type RK, RB, RC, RE, ER: [D 7445](#), [D 6969 R](#), [D 7555 R](#), [D 7325](#)